



DOOR ACCESS CONTROL

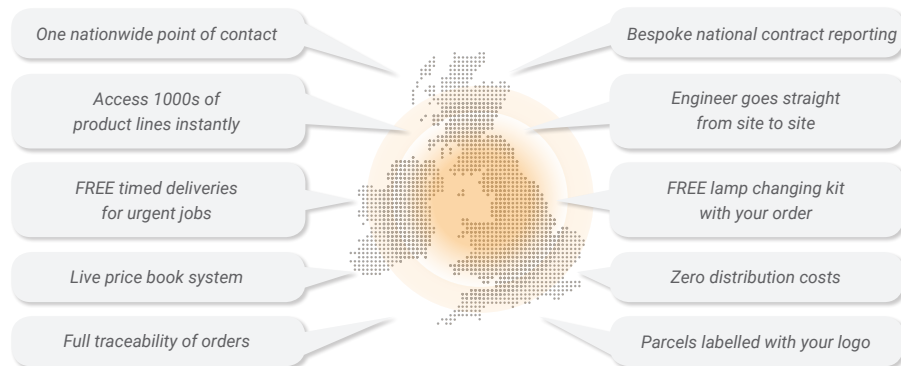
Making *your* life easier and reducing *your* costs...

Using the fundamental principles of LEAN methodology, RLT Onsite streamlines the delivery of materials to sites which reduces waste and costs dramatically.







It's not rocket science, but with our changing world, your clients are expecting you to do more, for less. RLT Onsite turns traditional thinking around and provides you with a flexible delivery system that ensures your parts go straight to site, on time, every time.

We maximise your workforce productivity. You will spend more time earning money on sites fixing problems than having to source their materials wasting time, fuel and resources.

And in the process, we fulfil our mission; **we make your life easier.**



Contents:

	Keypads	04
	Stand-alone access control	04
	Electro-magnetic locks & accessories	05
	Electric locks & strikes	07
	Power supplies	09
	Accessories	10

Keypads

Remote keypads



T1-2000 Stylish backlit keypad, 2 relays

T1-2002 Stylish backlit Bluetooth keypad, 3 relays

T1-2005 Stylish backlit keypad, 3 relays



T1-2010
Cdvi narrow backlit keypad with remote electronics 2 relays

Self contained keypads



T1-1000
CDVI CBB heavy duty self-contained keypad with braille buttons



T1-1000A
Self-contained stainless steel keypad - ACT 10



T1-1000P
CDVI PROMI-ECO self-contained keypad polycarbonate self-contained



T1-3000
Self-contained rugged keypad - dga



T1-3005
Self-contained flush keypad - CAASE



T1-3010
Narrow stainless steel keypad 2 relays



T1-3015
Stainless steel keypad with integrated electronics and push



T1-3020
Stainless steel keypad with integrated electronics



Have you tried the
my.simplionsite.co.uk
online portal?

Stand-alone access control



T1-1600
Self-contained long range reader stand alone



T1-1605
DGPROX/PROMI500 self-contained single door reader/controller 500 users



T1-7130
DG502UP 2-door controller



T1-1620
DGLI stainless steel proximity reader



T1-1630
Narrow style proximity reader, stainless steel



T1-7125
2 door modern controller



T1-7135
Standard proximity reader



T1-7140
Polycarbonate proximity reader for DG502UP



T1-7145
2 door modern auxiliary reader



T1-7070
Long-range reader hands free

Electro-magnetic locks & accessories

Housings



T1-1042
1 metre housing, 1 cut-out for C3M11 & V3ER

T1-1705
2 metre housing, 1 cut-out for C3M11 & V3ER

T1-1710
2 metre housing, 2 cut-outs for C3M11 & V3ER

T1-1730
1M housing, 1 cut-out for AT500 magnetic lock

T1-1735
2M housing, 1 cut-out for AT500 magnetic lock

T1-1740
2M housing, 2 cut-outs for AT500 magnetic locks

T1-1745
2M housing, 2 cut-outs for AT500 magnetic locks vertical fix



T1-1715
2 metre housing, 2 cut-outs for C3M11 & V3ER, vertical fix

T1-1720
L bracket for AT300-1 housing

T1-1725
L bracket for AT300-2 housings

T1-1750
1M L bracket for AT500-1 housing

T1-1755
2M L bracket for AT500-2 housings

T1-1760
Mortice magnet, monitored, for AT500 housings

Brackets & accessories



T1-1003
Z&L bracket for 180kg magnets



T1-1013
Adjustable L bracket for 300kg & 400kg surface magnets



T1-1800
Fully adjustable L bracket for 300/400kg surface magnet Locks



T1-1805
Fully adjustable L bracket for 500kg surface magnets



T1-1810
Universal Z bracket for 300kg, 400kg & 500kg magnets
T1-1005
Z & L bracket for 300kg and 400kg magnets



T1-1815
Surface armature housing for 300kg magnets



T1-1820
Economy surface armature housings for 300kg series

T1-1825
Flush armature housing for 300kg series

T1-1830
Economy surface housing for 400kg series



T1-1835
Surface armature housing for 500kg magnets

T1-1840
Economy surface armature housings for 300kg series5

T1-1845
Flush armature housing for 500kg series



T1-1850
Glass door U bracket for magnet armatures

T1-1855
Universal U bracket for locking products



T1-1860
2500mm glass door fixing U bracket



T1-1865
Kit with 2 x ALMA + 2 x REO - 2500mm



T1-1870
Kit with 2 x ALMA + 2 x REO - 600mm



T1-1875
2500mm aluminium spacer, 5mm thick



T1-1880
2500mm aluminium cable tray



T1-1100
Thread lock for securing fixings (10gm)

Electro-magnetic locks & accessories

External magnets



T1-1900
External stainless steel surface magnet, 180kg, monitored



T1-1905
External stainless steel surface magnet, 180kg, monitored



T1-1920
External mortice 300kg magnetic lock, monitored



T1-1925
External mortice 300kg magnetic lock, monitored



T1-1930
L bracket for the I400SR (ES400)

T1-1935
L bracket for the I500SR (ES500)

T1-1940
Z bracket for the I400SR & I500SR (ES400 & ES500)



T1-1015
Round magnetic lock, 250kg



The **mySOS** app can be bespoke designed for Platinum accounts



Surface magnets



T1-1500
V1SR (S180) 180kg surface magnetic lock, monitored



T1-1029
V3S (S300) surface 300kg magnetic lock, visual indication



T1-1510
Surface 300kg magnetic lock, monitored, visual indication



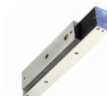
T1-1515
Surface 300kg lock, monitored with audible



T1-1525
V4S (S400) surface 400kg magnetic lock, visual indication



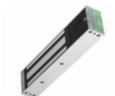
T1-1530
Surface 400kg magnetic lock, monitored



T1-1535
Surface 500kg magnetic lock



T1-1540
Surface 500kg magnetic lock, monitored



T1-1545
Surface 500kg magnetic lock, monitored with audible



T1-1550
Double surface magnet, monitored, 300kg per side



T1-1555
Double standard magnet, 500kg per side, monitored



T1-1560
Entry level surface magnet, 300kg, monitored



T1-1025
Entry level surface magnet, 300kg, monitored

Electro-magnetic locks & accessories

Mortice magnets



T1-1400
300kg flush magnetic lock, monitored



T1-1405
400kg flush magnetic lock, monitored



T1-1410
Entry level mortice magnet, 300kg, monitored



T1-1025
Entry level surface magnet, 300kg, monitored T2/24Vdc

Magnetic door holders



T1-1035
Wall-mounted magnetic door holder - 50Kg, 24Vdc



T1-1037
Spare armature for VIRAS



T1-1040
Floor-mounted magnetic door holder - 50Kg, 24Vdc



T1-1043
Spare armature for VIRP5



T1-1045
Adjustable wall extension/ floor bracket for VIR series

Electric locks



T1-1300
Narrow style shearlock, monitored



T1-1305
Stainless steel surface housing for POWERMAG25



T1-1310
Flush mounted shearlock, 1500kg holding force



T1-1315
Stainless steel surface housing



T1-1320
Traditional shearlock



T1-1325
Surface housing for P1200SHL



T1-1330
Fail-safe solenoid bolt, monitored



T1-1335
Stainless steel surface housing for DX200



T1-1340
22mm electric lock
T1-1345
32mm electric lock
T1-1350
50mm electric lock



T1-1355
Fail secure double action lock, 25mm backset
T1-1360
Fail-safe double action lock, 25mm backset



T1-1365
Fail secure double action lock, 30mm backset
T1-1370
Fail-safe double action lock, 30mm backset



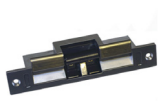
T1-1375
Fail secure double action lock, 35mm backset
T1-1380
Fail-safe double action lock, 35mm backset



T1-1385
Motorised dead-bolt
T1-1390
Motorised dead-bolt with manual over-ride

Electric strikes

ANSI strikes



T1-1210
Deadbolt release, fail secure, monitored
T1-1215
Deadbolt release, fail-safe, monitored



T1-1220
ANSI strike, 12Vdc, monitored
T1-1225
ANSI strike, 24Vdc, monitored



T1-1230
25mm extension lip for ARU series only
T1-1235
50mm extension lip for ARU series only



Need some help?
Call us on
0151 480 4000

Euro strikes



T1-2015
Fail secure strike kit, 12Vac/dc, fixed jaw
T1-2020
Fail-safe strike kit, 12Vdc, fixed jaw
T1-2025
Fail secure strike kit, 12Vac/dc, adjustable jaw
T1-2030
Fail secure strike kit, 12Vdc, continuous rated, adjustable jaw



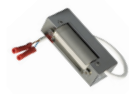
T1-2035
Fail-safe strike kit, 12Vdc, adjustable jaw
T1-2040
Fail secure strike kit, 24Vdc, continuous rated, adjustable jaw
T1-2045
Fail-safe strike kit, 24Vdc, adjustable jaw



T1-2050
Symmetrical fail secure strike, 12Vac/dc
T1-2055
Symmetrical fail secure strike, 12Vdc, continuous rated
T1-2060
Symmetrical fail-safe strike, 12Vdc
T1-2065
Symmetrical fail secure strike, 12Vdc monitored, continuous rated



T1-2040
Fail secure strike, 24Vdc continuous rated
T1-2045
Fail safe strike, 24Vdc
T1-2085
Fail safe strike, 24Vdc continuous rated, c/w TG11
T1-2095
Symmetrical fail safe strike, 24Vdc



T1-2100
Symmetrical fail secure strike, fire rated, 12Vdc continuous rated
T1-2105
Symmetrical fail-safe strike, fire rated, 12Vdc
T1-2085
Fail-safe strike, 24Vdc continuous rated, c/w TG11
T1-2115
Symmetrical fail-safe strike, fire rated, 24Vdc



T1-2120
Stainless steel faceplate, 158mm



T1-1004
Stainless steel faceplate with deadbolt cut-out



T1-2130
Surface RIM case, outward opening door, grey finish



T1-2135
Surface RIM case, outward opening door, brass finish



T1-2140
Surface RIM case, grey finish



T1-2145
Surface RIM case, chrome finish



T1-2150
Surface RIM case, brass finish



T1-2155
High security safety strike, 12V, right handed, monitored
T1-2160
High security safety strike, 12V, left handed, monitored



T1-2165
High security safety strike, 24V, right handed, monitored
T1-2170
High security safety strike, 24V, left handed, monitored



T1-2175
Weatherproof and dustproof electric strike - right handed
T1-2180
Weatherproof and dustproof electric strike, - left handed

Power supplies

Power supplies without charger



T1-1050
Power supply, 12Vdc, 1A
T1-1052
Power supply 512Vdc, 1.0A with integral relay and timer



T1-2500
Power supply, 12Vdc, 2A and 12Vac, 350mA
T1-1070
Power supply, 24Vdc, 1A



T1-2505
Transformer, 12/24Vac
T1-2510
Transformer, 12Vac



Have you seen our
#easertips online at
www.rltonsite/easertips

Power supplies with charger



T1-1075 24Vdc, 1A power supply in large case

T1-1080 24Vdc, 2A power supply in standard case

T1-1085 24Vdc, 2A power supply in large case

T1-1086 24Vdc, 3A power supply in large case

T1-1087 24Vdc, 5A power supply in large case

T1-2515 12Vdc, 1A power supply in standard case

T1-1055 12Vdc, 1A power supply in large case

T1-1060 12Vdc, 2A power supply in standard case

T1-1065 12Vdc, 2A power supply in large case

T1-2520 12Vdc, 3A power supply in standard case

T1-2525 12Vdc, 3A power supply in large case

T1-2530 12Vdc, 5A power supply in large case

T1-2535 12Vdc, 7AH rechargeable battery



Accessories

Door loops



T1-1095
30cm compact metal door loop



T1-1096
60cm compact metal door loop



T1-1097
450mm traditional door loop -



T1-1098
Vandal resistant door loop



T1-1099
Concealed door loop



T1-1094
2-pin transfer hinge



T1-1096
3-pin transfer hinge

We love feedback scan here..



Exit buttons



T1-2600
Standard plastic exit button, surface-mounted
T1-2605
Standard plastic exit button, flush-mounted



T1-2610
Plastic architrave exit button, surface-mounted
T1-2615
Plastic architrave exit button, flush-mounted



T1-2620
Wide button, plastic exit switch, surface-mounted
T1-2625
Wide button, plastic exit switch, flush-mounted



T1-2630
Surface-mounted, stainless steel exit button
T1-2635
Flush-mounted, stainless steel exit button



T1-2640
Stainless steel architrave exit button, surface mounted
T1-2645
Stainless steel architrave exit button, flush-mounted



T1-1090
Surface-mounted, green dome exit switch



T1-2650
All active "EXIT" switch, flush-mounted
T1-2655
All active "EXIT" switch, flush-mounted



T1-2660
All active "Wheelchair logo" exit switch, surface-mounted
T1-2655
All active "Wheelchair logo" exit switch, flush-mounted



T1-2670
Large all active exit switch, surface-mounted
T1-2675
Large all active exit switch, flush-mounted



T1-2680
Large all active exit switch with disable logo, surface-mounted
T1-2685
Large all active exit switch with disable logo, flush-mounted



T1-2690
Large all active exit switch, surface-mounted
T1-2695
Large all active exit switch, flush-mounted



T1-2700
Architrave all active exit switch, surface-mounted



T1-2705
Infrared exit switch, flush-mounted
T1-2710
Infrared exit switch, surface-mounted



T1-1092
Emergency door release, break-glass, double pole



T1-2720
Replacement glass for EM200

Accessories

Exit buttons (continued)



T1-1016
Resettable emergency door release, double pole
T1-2725
Protective cover for EM201
T1-2730
Spare reset key for EM201



T1-2735
Domed exit button and resettable emergency door release



T1-2740
Resettable emergency door release, triple pole



T1-2745
Stainless exit button and resettable emergency door release
T1-2750
Domed exit button and break-glass emergency door release
T1-2755
Stainless exit button and break-glass emergency door release



T1-2760
Green double back box surface-mounted



T1-2765
Microswitch push bar

Our mission...
continuously dedicated to making life easier for our clients

Our values...
energy | innovation | integrity | teamwork

Key switches



T1-2800
Surface-mounted keyswitch, maintained, keyed alike
T1-2805
Flush-mounted keyswitch, maintained, keyed alike
T1-2810
Surface-mounted keyswitch, maintained, keyed to differ
T1-2815
Flush-mounted keyswitch, maintained, keyed to differ



T1-2820
Surface-mounted keyswitch, momentary, keyed alike
T1-2825
Flush-mounted keyswitch, momentary, keyed alike
T1-2830
Surface-mounted keyswitch, momentary, keyed to differ
T1-2835
Flush-mounted keyswitch, momentary, keyed to differ



T1-2840
Architrave keyswitch, maintained, keyed alike, surface mounted
T1-2845
Architrave keyswitch, maintained, keyed alike, flush mounted
T1-2850
Architrave keyswitch, momentary, keyed alike, surface mounted
T1-2855
Architrave keyswitch, momentary, keyed alike, flush mounted



T1-2860
3 position keyswitch, surface-mounted
T1-2865
3 position keyswitch, flush-mounted



T1-2870
Surface-mounted euro keyswitch, maintained (cylinder not included)
T1-2875
Flush-mounted euro keyswitch, maintained (cylinder not included)
T1-2880
Surface-mounted euro keyswitch, momentary (cylinder not included)
T1-2885
Flush-mounted euro keyswitch, momentary (cylinder not included)

We also do spares for:

Biometric | Audio Video | Transmitters and Receivers

Other brands supplied:

Gianni | Vanderbilt (ACT)

Join the revolution... Step into the future...
Make *your* life easier!

SIMPLE, RAPID, DISTRIBUTION DESIGNED
FOR THE FUTURE.
MAKING *YOUR* LIFE EASIER.

.....

Our mission...

continuously dedicated to making life easier for our clients

Our values...

energy | innovation | integrity | teamwork

RLT Group Global Ltd

0151 480 4000 | www.rltonsite.co.uk